

# Pure.Sink

## INSTALLATION INSTRUCTIONS

### BASIN/KITCHEN SERIES

The manufacturer reserves the right to change the technical parameters and external characteristics of the product specified in this manual, if these changes do not affect the functionality.

Note: Detailed Information is in accordance with the final product.

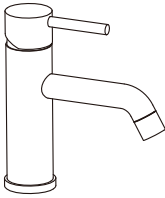




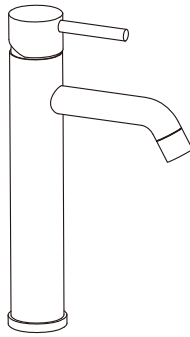
## For users attention

- Do not disassemble the faucet main body, as it was assembled and fine-tuned to standard before leaving the factory;
- To avoid damage to the faucet, flush the water pipes before installation.
- After installation, make sure each joint safely sealed and does not leak.
- Using conditions: working pressure at 0.5 - 1.0 MPa (including cold and hot water), the water temperature should be at least 4 °C and not more than 90 °C.
- Make sure the hot and cold water pipes are connected correctly: if you stand in front, the hot water pipe must be connected to the left and the pipe cold water - to the right.

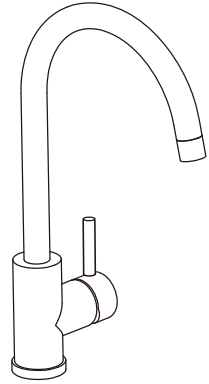
## Basin Faucet Installation



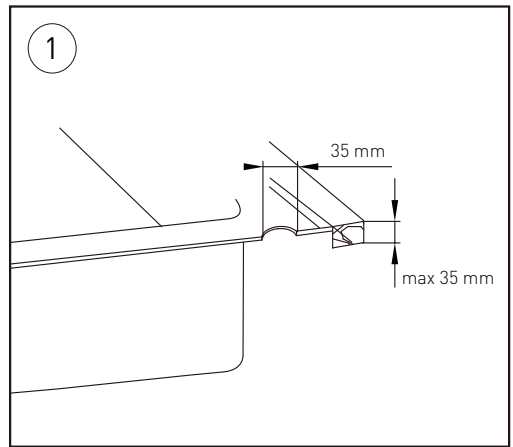
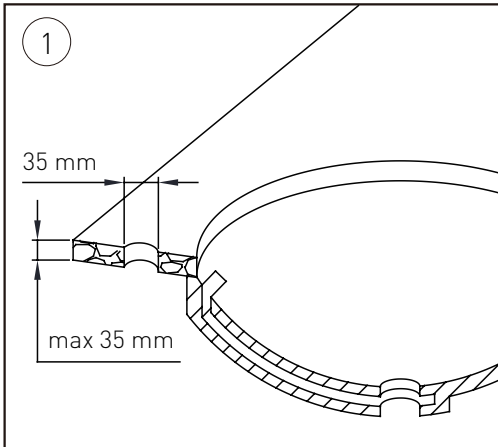
basin faucet



basin faucet

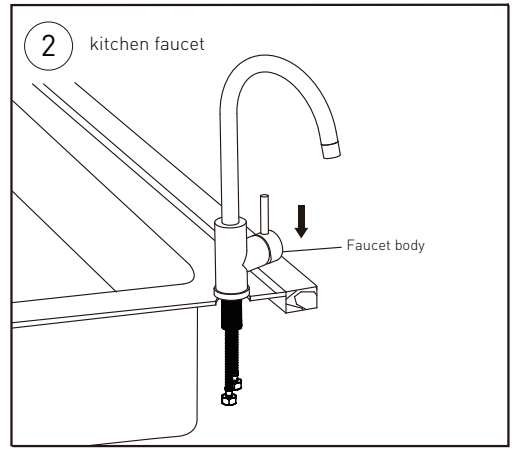
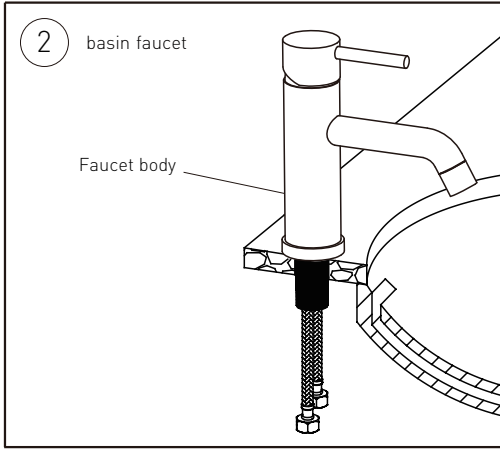


kitchen faucet

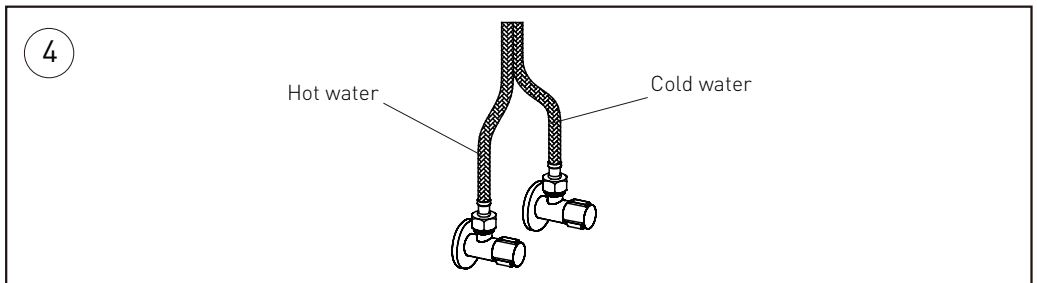
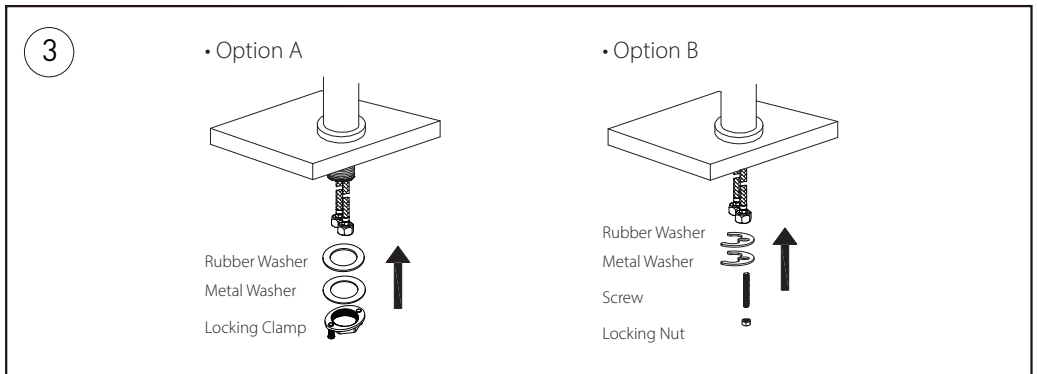


1. Make sure the washbasin or countertop has a 35mm hole, the maximum thickness of the washbasin or countertop is 35mm.

# Basin Faucet & Kitchen Faucet Installation



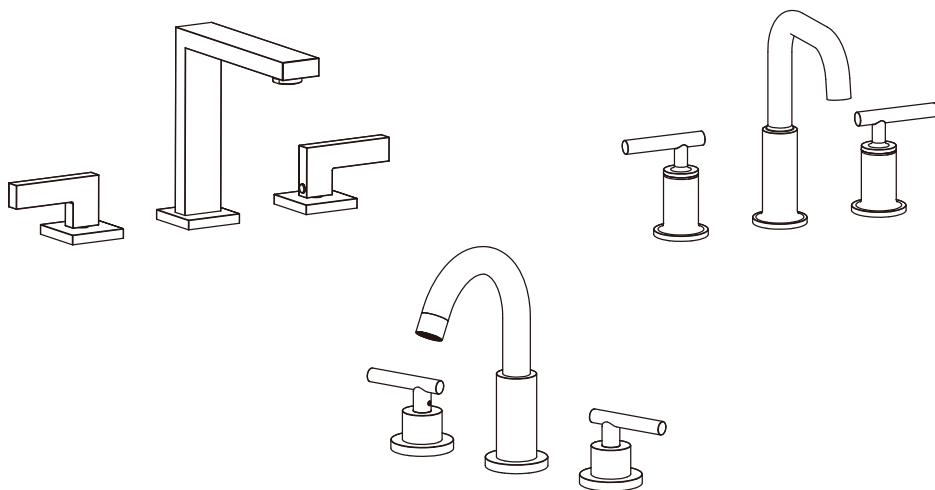
2. Install the faucet body and the water supply hoses into the mounting hole.



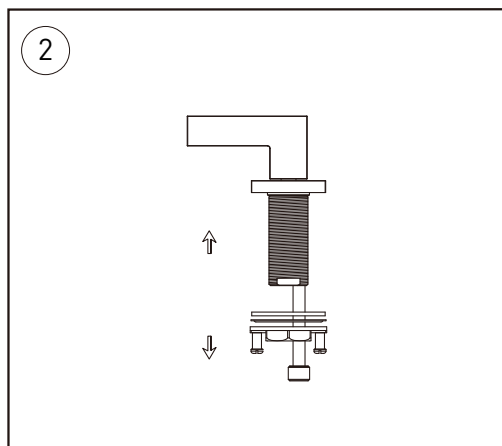
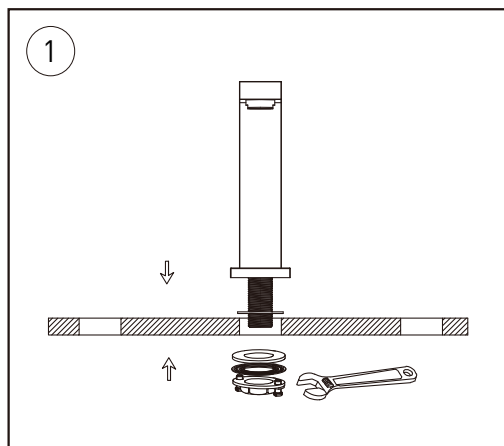
3. Install the seal, washer, brass nut and tighten the screws with a screwdriver.

4. Connect water hoses to the hot water supply valve (on the left) and cold water supply valve (on the right). Turn on water valves and faucet handle to check for leaks. If there are no leaks, the installation is completed.

## Widespread Basin Faucet Installation

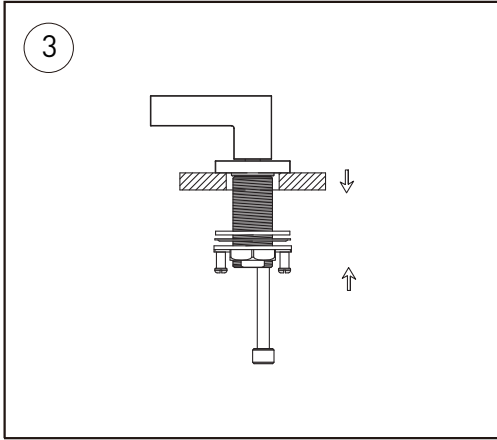


widespread basin faucet

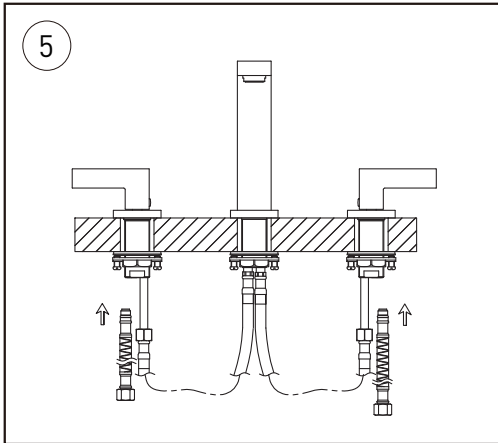
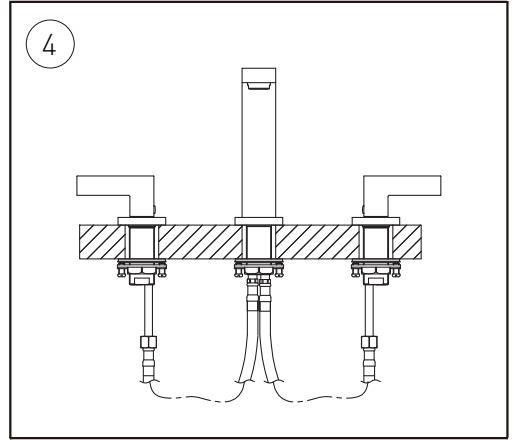


1. Remove the lock nut and washer from the spout body. Place spout in center hole of sink. Assemble washer and tighten the lock nut to it.
2. Remove mounting hardware from handle body.

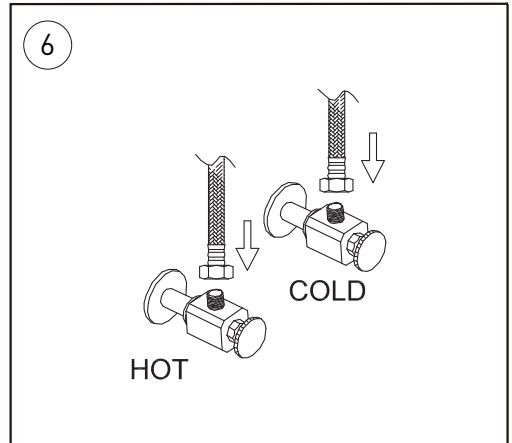
## Widespread Basin Faucet Installation



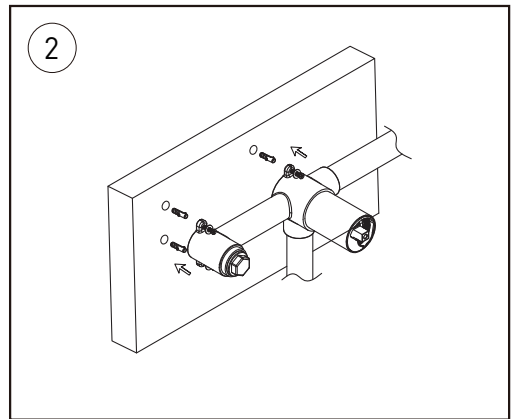
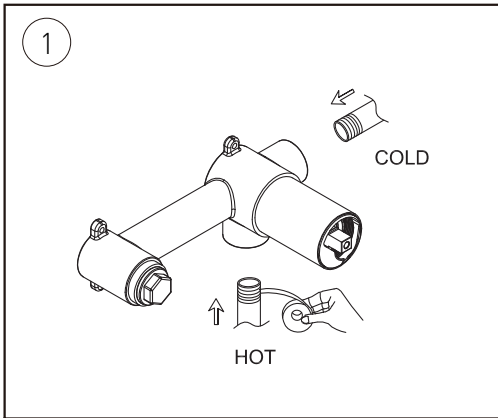
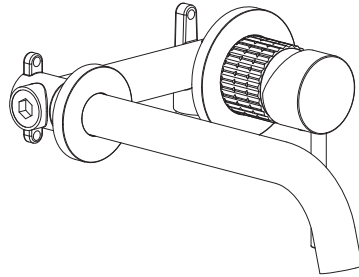
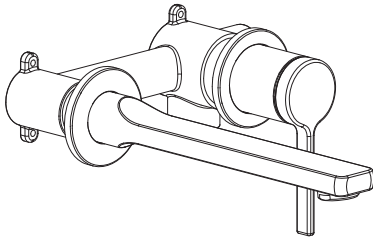
3. Place the spout in center hole of sink and handle body through right hole. (Left is red, right is blue). Assemble the rubber washer, washer and tighten with lock nut.  
4. Connect handle body and faucet body with braided hoses. Tighten wrench tight.



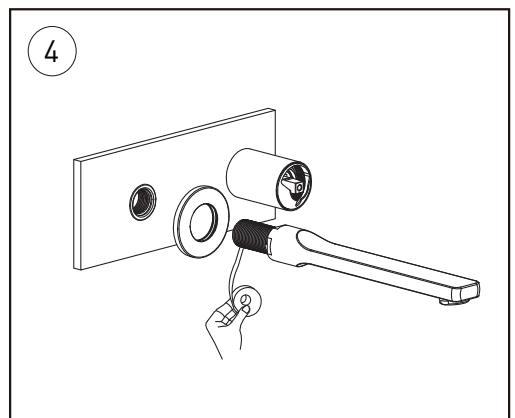
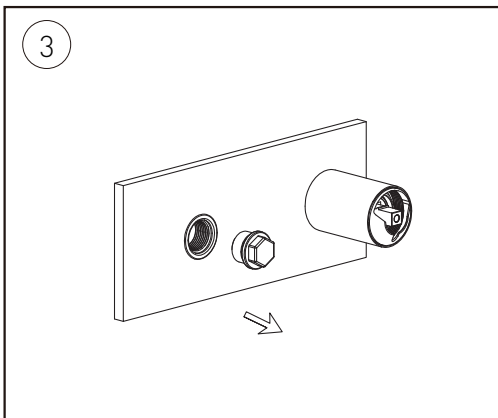
5. Screw and tighten the flexible hose to the faucet. Left is red, right is blue. Do not allow the water supply brass tube to twist.  
6. Attach flexible hose to water supply.



## Wall Mounted Basin Faucet Installation

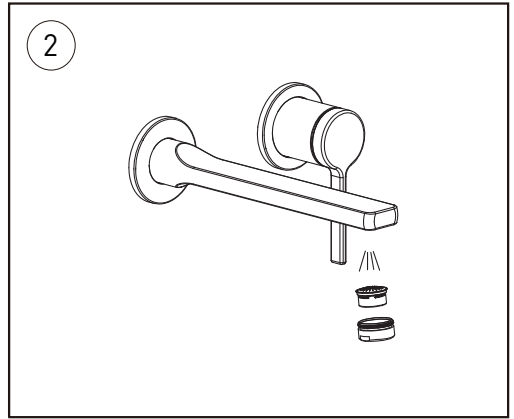
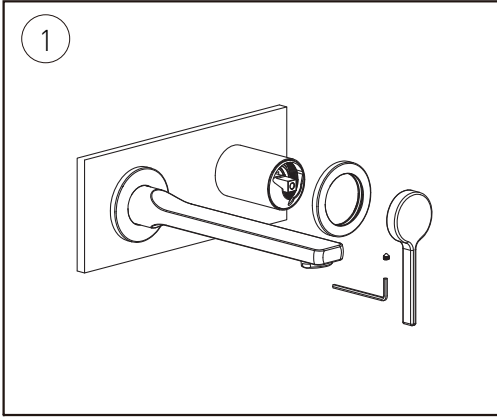


1. Use the pipe tape around the water pipe then connect to the hot and cold water pipe.
2. Fix the body of the basin faucet into the wall.



3. Remove the plug.
4. Wrap the thread of spout with teflon tape (ensure it must wrap clockwise). Screw-in to the inlet pipe inside the wall.

## Basin Faucet Installation

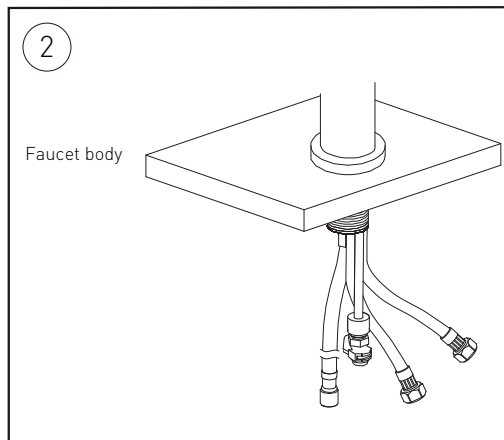
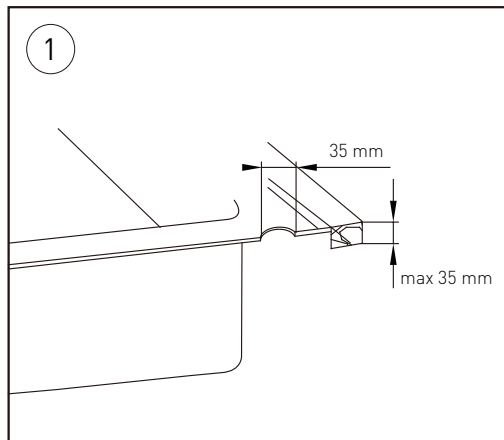
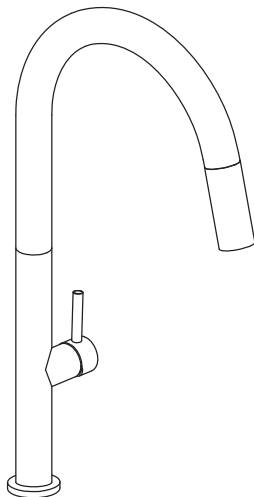
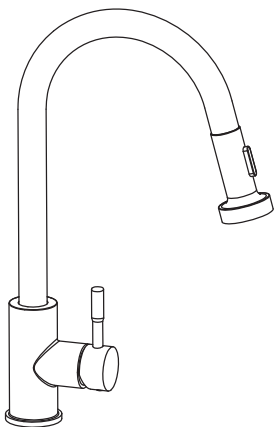
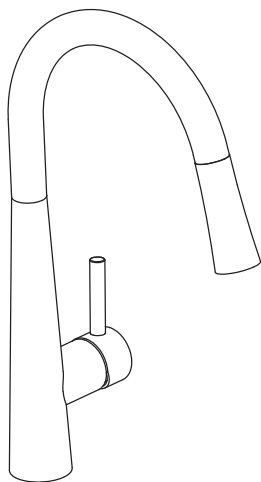


5. Install the decorative cover on the wall clingy, then use the hexagon wrench to install the handle.

6. After install the faucet, remove the aerator, turn on the faucet handle for one minute to flush debris from the faucet, close the handle and reassemble the aerator.



## Pull Out Kitchen Faucet Installation



1. Make sure the washbasin or countertop has a 35mm hole, the maximum thickness of the washbasin or countertop is 35mm.
2. Install the faucet body and the water supply hoses into the mounting hole.

## Pull Out Kitchen Faucet Installation

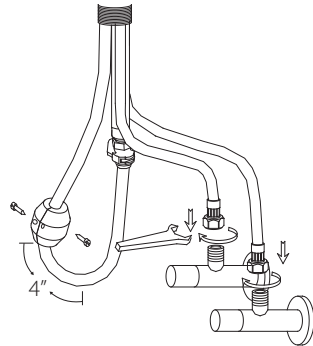
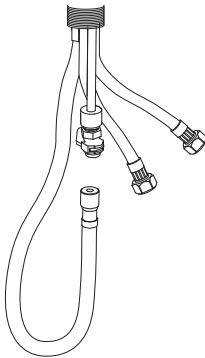
2

Plastic Clamp  
avail. on some models

Rubber Washer

Metal Washer

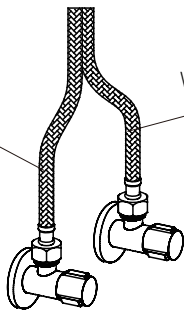
Locking Clamp



4

Water supply

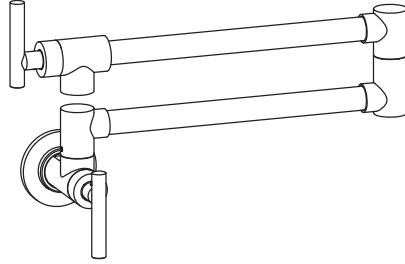
Water supply



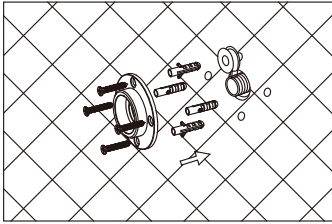
3. Install the seal, washer, brass nut and tighten the screws with a screwdriver.

4. Connect water hoses to the hot water supply valve and cold water supply valve. Turn on water valves and faucet handle to check for leaks. If there are no leaks, the installation is completed.

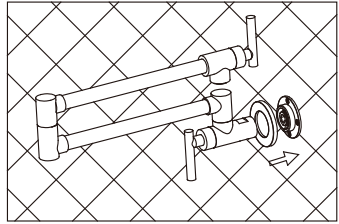
## Pot Filler Kitchen Faucet



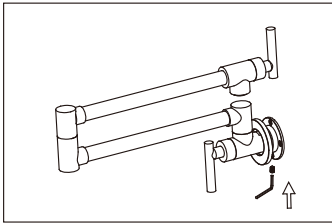
1



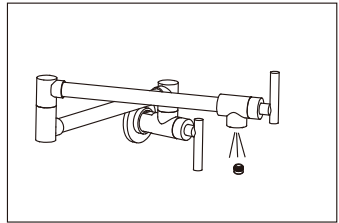
2



3



4



1. Wrap the thread on the pipe with the plumber's tape ,then fixed the pipe inside the wall.Fixed the expansion screw into the wall,screw the base on the wall.

2.The cover hung on the body ,then install the faucet into the wall and tighten.

3.Fixed the small screw in the base ,fasten the tap and the connecting pipe.Then adjust the cover to the base.

4.Remove the areator,turn on the water , then flush the faucet and check for the leaks.If ok,then turn off the water and install the areator.

## Product care

- It is recommended to use special products for chrome surfaces or soapy water to clean the surface.
- Wash off dirt with a soft sponge without rubbing. Dry the surface with a soft cloth.
- Do not use abrasive materials, rough paper or sharp objects.
- Do not use detergents containing acids or solvents or means for removing limescale.

## Warranty conditions

The warranty period for products starts from the date of purchase, which is confirmed by a correctly completed warranty certificate - with a note of the item number, date of sale and the signature of the buyer and the sale or cash register receipt.

The warranty conditions do not include work on installation, connection and adjustment of equipment, as well as advice on operations.

The manufacturer reserves the right to make changes to the construction, design and complete set of the product.

### **Warranty repair and service may be refused in the case of:**

- the use of parts or components of another manufacturer. In this case, the service center is not responsible for product operation;
- pollution, limescale build-up;
- unqualified installation;
- repair or reoperation of the product by persons not authorized to carry out such work;
- incomplete set of the product;
- the use of the product for other purposes;
- normal aging of parts, such as decorative attachments, aerators, sealants, gaskets, etc.;
- surface treatment of the product with abrasive or cleansing agents or substances that contain acids
- if the defect is caused by careless handling or improper care;
- absence of warranty documents (warranty certificate, sale or cash register receipt);
- mechanical damage..

### **The warranty is not valid in the following cases:**

- if the Product has been damaged by third parties during transportation, storage, installation or repair, after the transfer of property rights to the Product to the consumer;
- if the Owner has intentionally or unintentionally caused damage to the Product as a result of an improper storage, usage or care (for example, if the Product has been exposed to natural conditions, excessive ultraviolet radiation, thermal shock, chemical and mechanical damage, etc.);
- if the Owner did not follow the installation and care instructions;

- product malfunction is caused by manufacturer-independent reasons, such as change of pressure in water supply, corrosion of public water supply, water pollution, natural phenomena, natural disasters, fire, etc.

When purchasing the Product, the Owner agrees that the limits of liability for damage do not exceed the amount stated in the original invoice for the Product. The manufacturer is not liable for damages that are not covered by this warranty: in particular, liability for the unusable Product, lost profits or commercial opportunity, inconvenience or emotional suffering of the Owner; consequential and indirect losses or penalties related to damage to the Product by third parties.

**FAUCET TROUBLE SHOOTING:**

Problem	Possible Cause	Corrective Action
Water does not shut off completely.	1.O-ring is not seated correctly or worn. 2.Cartridge may be defective.	1.Reseat or replace O-ring. 2.Replace cartridge
Leaks at waterline connection.	1.Worn or broken washer.	1.Replace washer.
Leaks from handle.	1.Cartridge may come loose. 2.Cartridge may be defective.	1.Reseat cartridge tight. 2.Replace cartridge.
Leaks at hose connection.	1.Hose connection is loose.	1.Tighten hose. 2.Replace hose.
Leaks at shower valve connection	1.Connection may come loose or not sealed completely. 2.Defective shower valve inlet or outlet connector.	1.Check connections. 2.Replace valve body.
Diverter knob does not work.	1.Diverter cartridge may be defective.	1.Replace cartridge.
Low flow	1.Check for water pressure problems. 2.Aerator may be dirty or clogged.	1.Clean or replace the aerator. 2.Remove water flow restrictor if available. 3.Install booster or pump (if applicable).

# The warranty period for products

ACCESSORIES CATEGORY	WARRANTY PERIOD (FUNCTION,APPEARANCE)
CARTRIDGE	SHOWER SET (THERMOSTATIC/HOT & COLD) 2 YEARS
	BATHTUB FAUCET/POTFILLER 2 YEARS
	BASIN/KITCHEN FAUCET 5 YEARS
SHOWER/KITCHEN FAUCET TUBE	1 YEAR
SHOWER HOSE	1 YEAR
KITCHEN FAUCET SPOUT	1 YEAR
SHOWER HEAD, HAND SHOWER	1 YEAR
SHOWER/KITCHEN/BASIN MIXER BODY (CHROME COLOR)	5 YEARS
SHOWER/KITCHEN/BASIN MIXER BODY ( BRUSH NICKEL,MATTE BLACK,BRUSH GOLD, GUN BLACK)	2 YEARS

\*The specified warranty periods are valid when purchasing products for private use. The warranty period is 6 months in the case of use of products in the public and industrial spheres.

20231013

THANK YOU FOR YOUR CHOICE !



**Pure.Sink**  
[www.puresink.eu](http://www.puresink.eu)